

# INSTALLATION & MARINE OPERATIONS



# Company Background

GM Green Marine(UK) Ltd, founded in 2012

GM Based in Scotland

GM Services:

GM Turnkey Solutions for Marine Operations

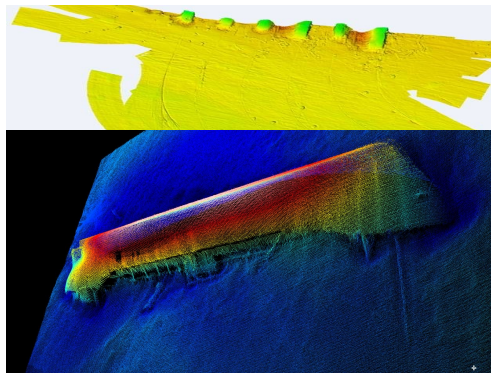
GM Vessel Charter

GM Crew Transfers

GM Consultancy + Engineering

GM Hydrographic Surveys

GM ROV Surveys (Visual + Cable)





# Recent Projects

- GM SAE – Simec Atlantis Energy – Site Decommissioning
- GM Wello Wave Energy Converter – Installation of Moorings, Umbilical & Device Hook-Up
- GM CorPower Wave Energy Converter – Installation of Moorings, Umbilical & WEC
- GM SME – Sustainable Marine Energy – Installation, Recovery & Anchor Drilling Operations
- GM Microsoft (Naval Group) – Installation & Recovery of Subsea Server (EPCI)
- GM UMBRA Group – Design, Installation & Recovery of Marine Platform for Trialling PTO unit



# Overview of Equipment & Processes

- GM Nearly all these operations make use of:
  - GM Multicats – extremely capable vessels, a fraction of the cost of larger AHT / DP vessels
  - GM Temporary moorings – provide high accuracy position keeping vs DP failures
  - GM Engineering – optimize devices to work with vessels and best operational practices
  - GM ROV's Inspection class – customize ROV tooling improves capability, tidal dependent performance (< 1kts)
  - GM Divers – Great capabilities, depth restrictions, high risk - experience in tide should not be assumed
  - GM Installation aids – alternative to divers/ROV, reduced project risk through improvements to operational success, repeatability, weather windows & safety!
- GM Incorporating marine operators earlier, can provide significant input w.r.t optimizing mooring / umbilical system design
- GM Focus on decommissioning during early design processes, with consideration to site selection & available marine assets/operators
- GM Drilled anchoring & mooring solutions are becoming more favourable & cost effective

# Recommendations for Developers

- GM Don't let funding drive unsustainable decisions – ensure correct funding is in place after detailed FEED study completion
- GM Incorporate marine operators into funded calls / applications
- GM Make use of Marine Operators expertise & advice – they've observed all aspects of offshore operations
- GM Ensure compatible material choices
- GM Ensure core office team has experienced personnel with real operational experience in lead roles
- GM Local company rep (on the ground) for continual engagement with the Marine Operator, in the lead up & post-operations.
- GM Project schedules should be realistic to maintain investor relations and industry confidence. Delays can be expensive.





# Thank You & Questions



Jason Schofield  
Managing Director

[www.greenmarineuk.com](http://www.greenmarineuk.com)

