



Data transferability – a test centre's perspective

Caitlin Long
Environment & Consents Specialist

Agenda

- Key barriers to sharing data and identifying the challenges
- Differing drivers for academic research vs. developer-led monitoring
- Good practice examples of sharing & disseminating data
- Opportunities and solutions



Barriers and challenges

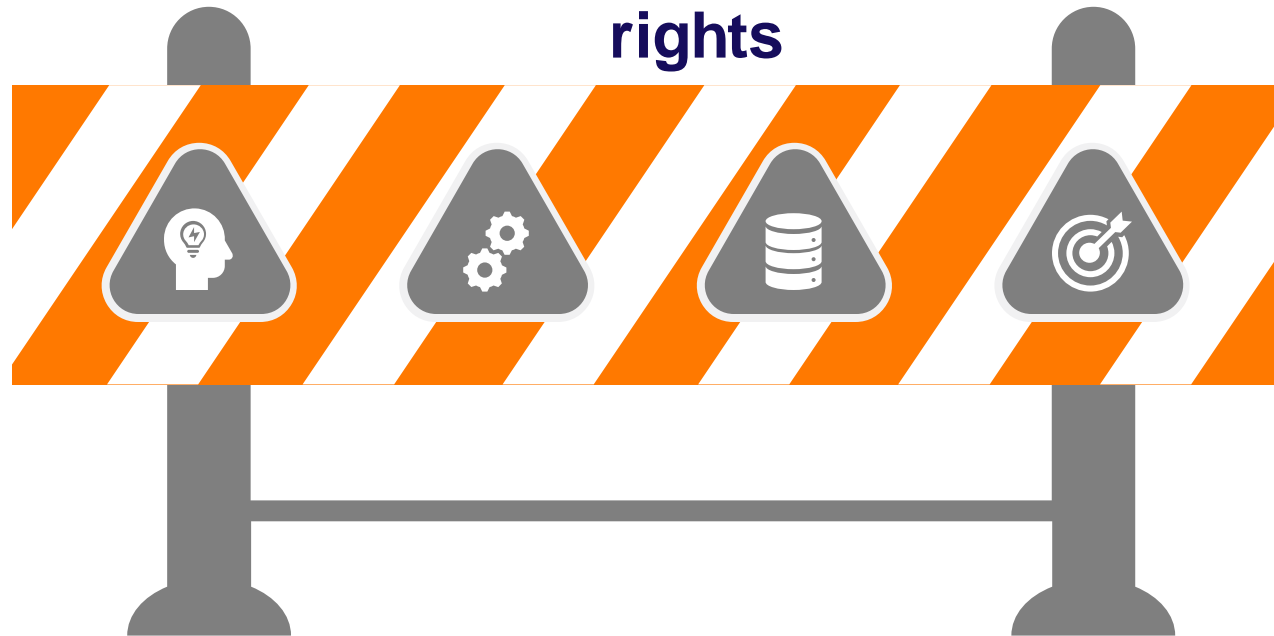
**Cost associated
with surveying**

**Confidentiality and
intellectual property
rights**

**Formatting and use
of appropriate
metadata**

**Storage and
dissemination
platforms**

Resourcing analysis

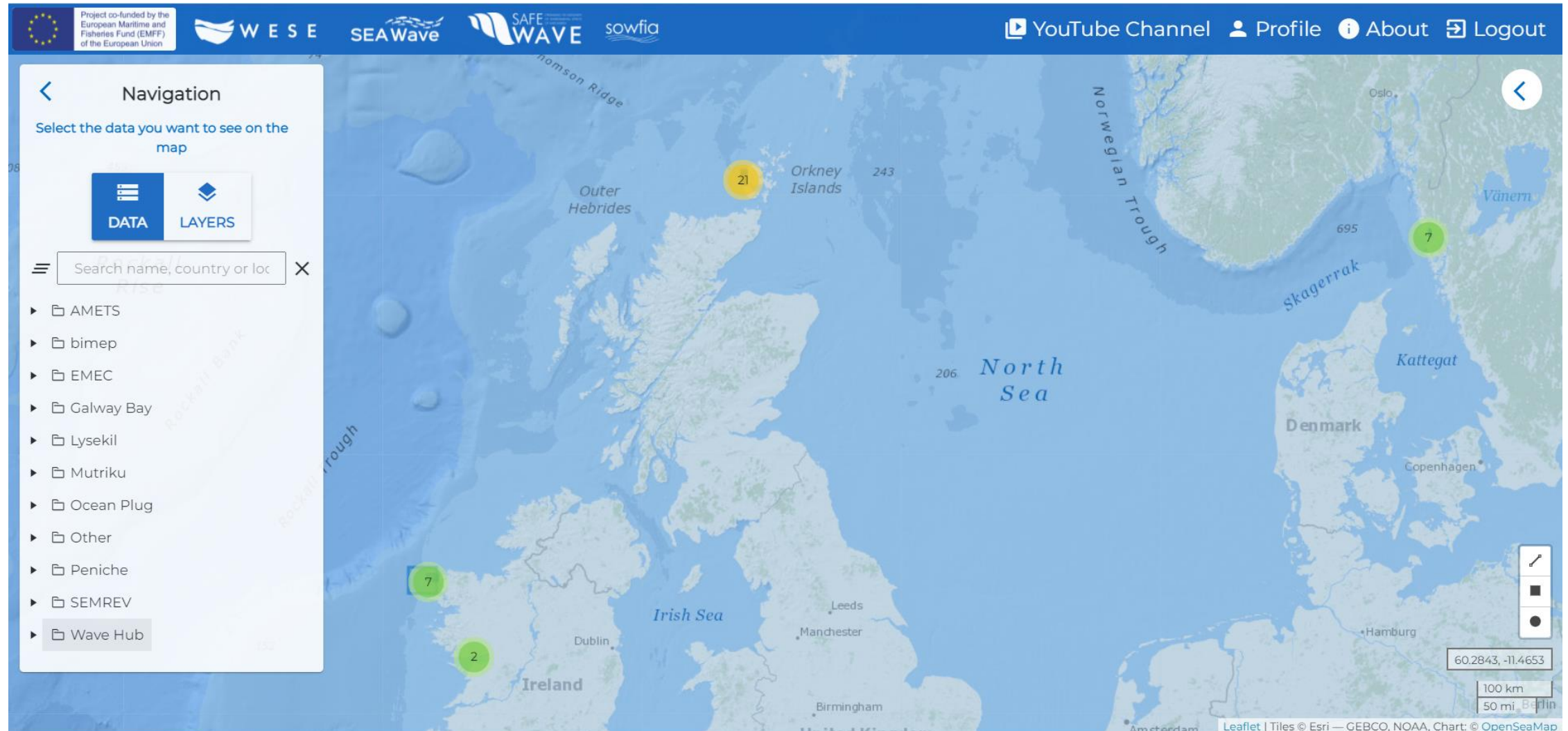


Academic research vs. developer-led monitoring

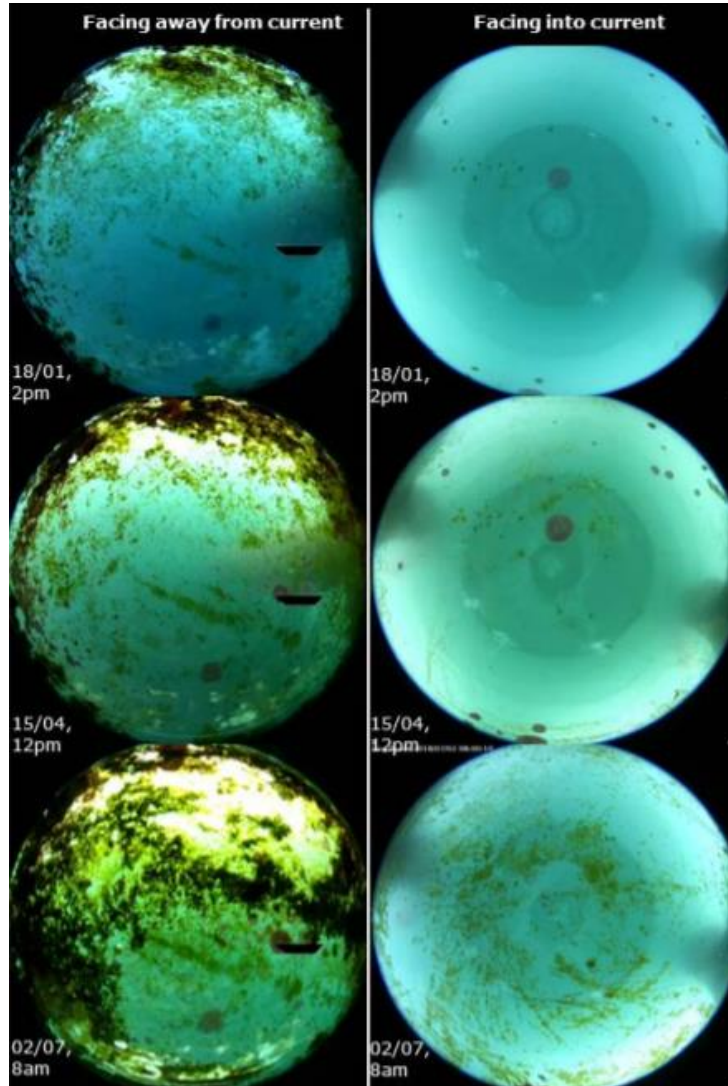
- Timeframes don't align
- Differing aims / objectives
- Research question-led monitoring
- Statistical robustness
- Standardisation versus innovation
- Project monitoring reports not comparable to academic manuscripts



Good practice example - MARENDATA



Consequences of data sharing



NatureScot Research Report 1225: Review of underwater video data collected around operating tidal stream turbines

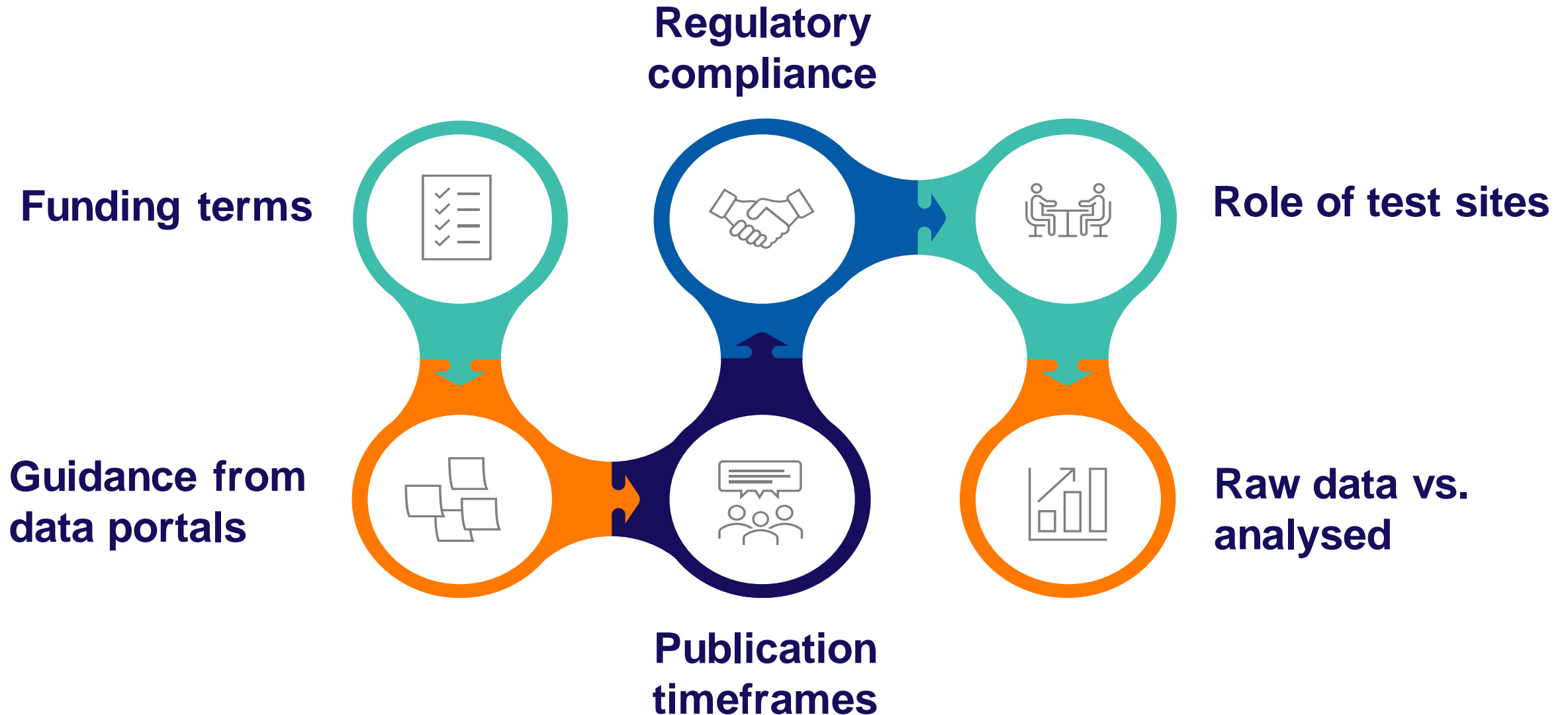
128 two minute video excerpts examined

Two protocols produced

36 recommendations



Opportunities for overcoming barriers



Conclusions

- Defined requirements for dissemination within EMPs
- Anonymisation techniques
- Metadata - adopt best practices
- Interconnect with widely recognised data sharing platforms e.g. EMODNet
- Appropriately fund data analysis and include in planning





Thank you